

Australia & New Zealand Region Only



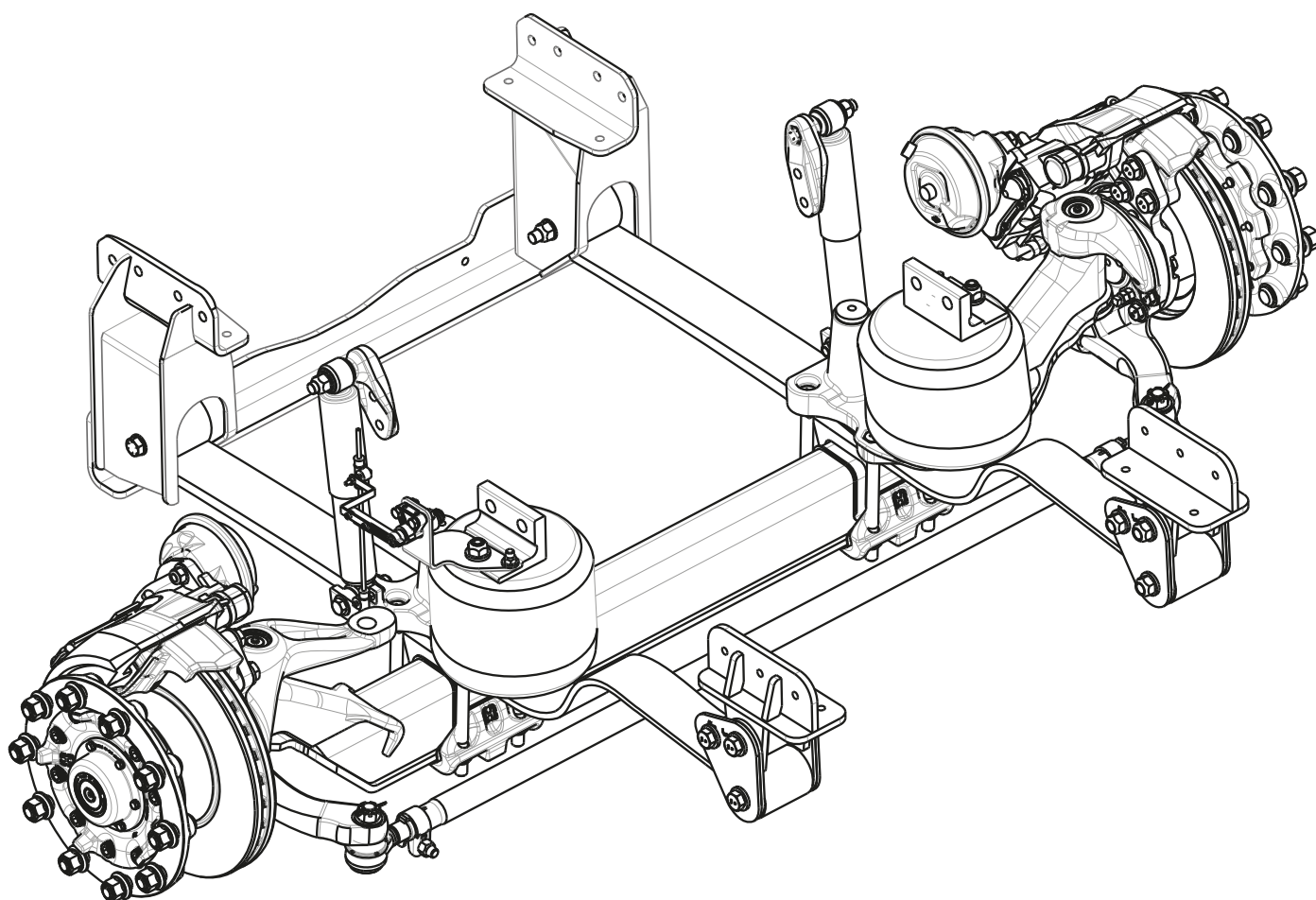
# PARTS LIST

## AIRTEK™ DENNIS EAGLE SUSPENSION

LIT NO: 97114-075

DATE: November 2024

REVISION: J



**TABLE OF CONTENTS**

|   |    |
|---|----|
| <b>ABBREVIATIONS</b>                                      | 2  |
| <b>INTRODUCTION</b>                                       | 3  |
| <b>HUB &amp; ROTOR ASSEMBLY IDENTIFICATION</b>            | 3  |
| <b>EARLY TYPE HUB ASSEMBLY EXPLODED VIEW – UP TO 2012</b> | 4  |
| <b>LATE TYPE HUB ASSEMBLY – FROM 2013</b>                 | 6  |
| <b>BRAKE CALLIPER ASSEMBLY</b>                            | 8  |
| <b>AXLE ASSEMBLY 3.9 METRE WHEELBASE</b>                  | 10 |
| <b>HANGER GROUP</b>                                       | 12 |
| <b>SUSPENSION ASSEMBLY</b>                                | 14 |
| <b>REVISIONS TABLE</b>                                    | 16 |

**ABBREVIATIONS**

Abbreviations used in this document include the following terms:

- AR – As Required
- Assy – Assembly
- N/A – Not Available
- NSS – Not Serviced Separately
- OBS – Obsolete

## INTRODUCTION

The purpose of this parts list is to document the replacement assemblies and repair parts available for the Hendrickson AIRTEK™ suspension system for the Dennis Eagle range of vehicles.

**NOTE:** All quantities listed within this parts list are as applicable for a single axle.

## HUB & ROTOR ASSEMBLY INFORMATION

The hub and rotor assembly as fitted to the AIRTEK second steer axle as fitted to Dennis Eagle models was revised on all axles with a build date of 1st January 2013. The changes to the hub and rotor assembly are as follows:

- Revised hub housing.
- Revised brake rotor.
- Introduction of metric (M8) hub cap attaching screws.
- Revised inner bearing cup and cone.
- Revised outer bearing cup and cone.

## HUB & ROTOR ASSEMBLY IDENTIFICATION

To identify whether the hub and rotor assembly is the early or late design, reference should be made to the axle identification plate as shown in Figure 1.

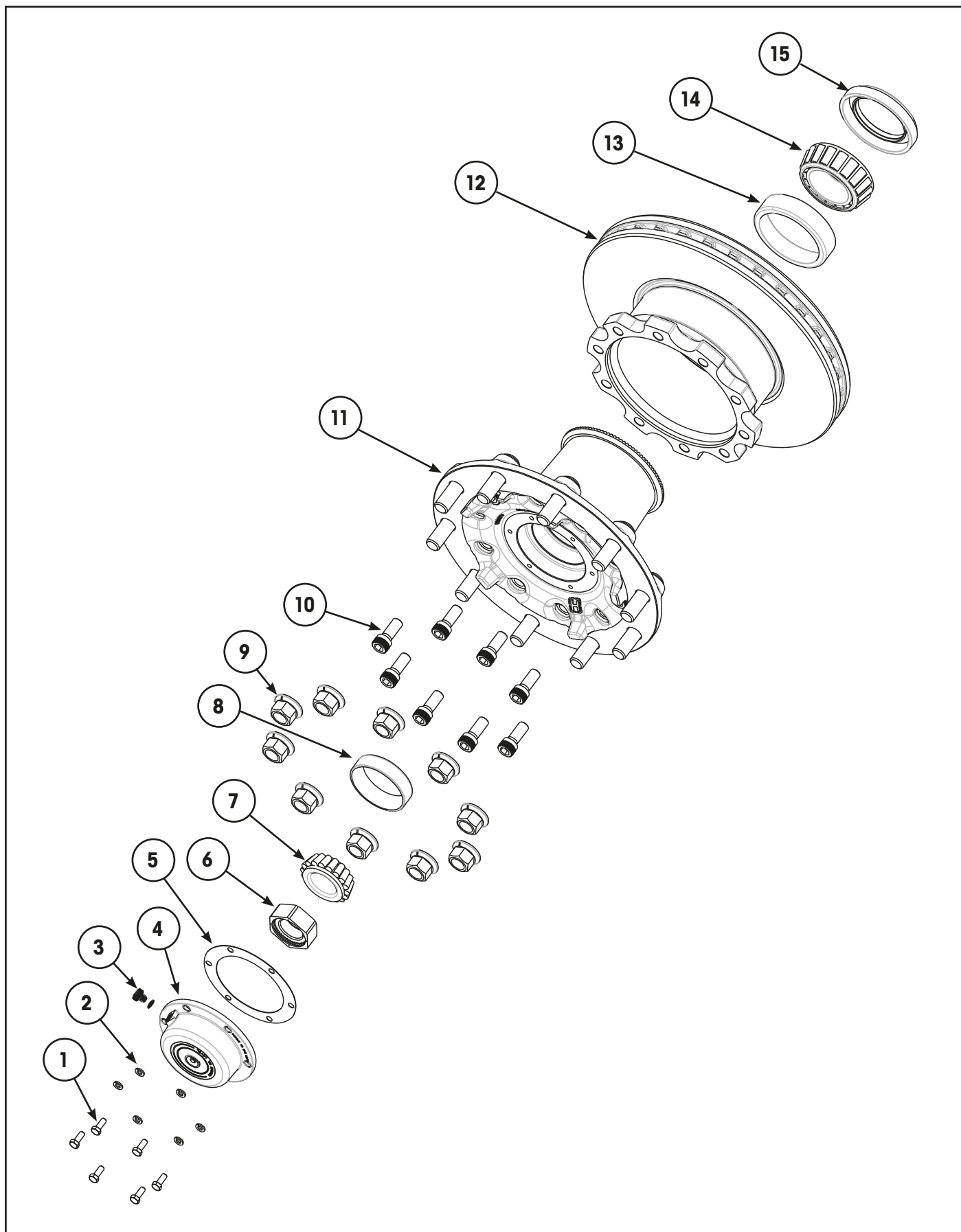


Figure 1

**IMPORTANT:** In cases where an early type hub and/or rotor require replacement, it is recommended that the complete hub and rotor assembly be replaced with the later design hub and rotor assembly in pairs. To facilitate this, the hardware hub & rotor service kit (part no. **98111-113**) should be used.

**IMPORTANT:** Hub cap kit part no. **98796-006** includes 5/16" UNC bolts. These bolts are unsuitable for the later hub design and must be discarded when replacement of hub cap on the later design hub is being performed. Refer to hub assembly parts listing below for further detail.

## EARLY TYPE HUB ASSEMBLY EXPLODED VIEW – UP TO 2012



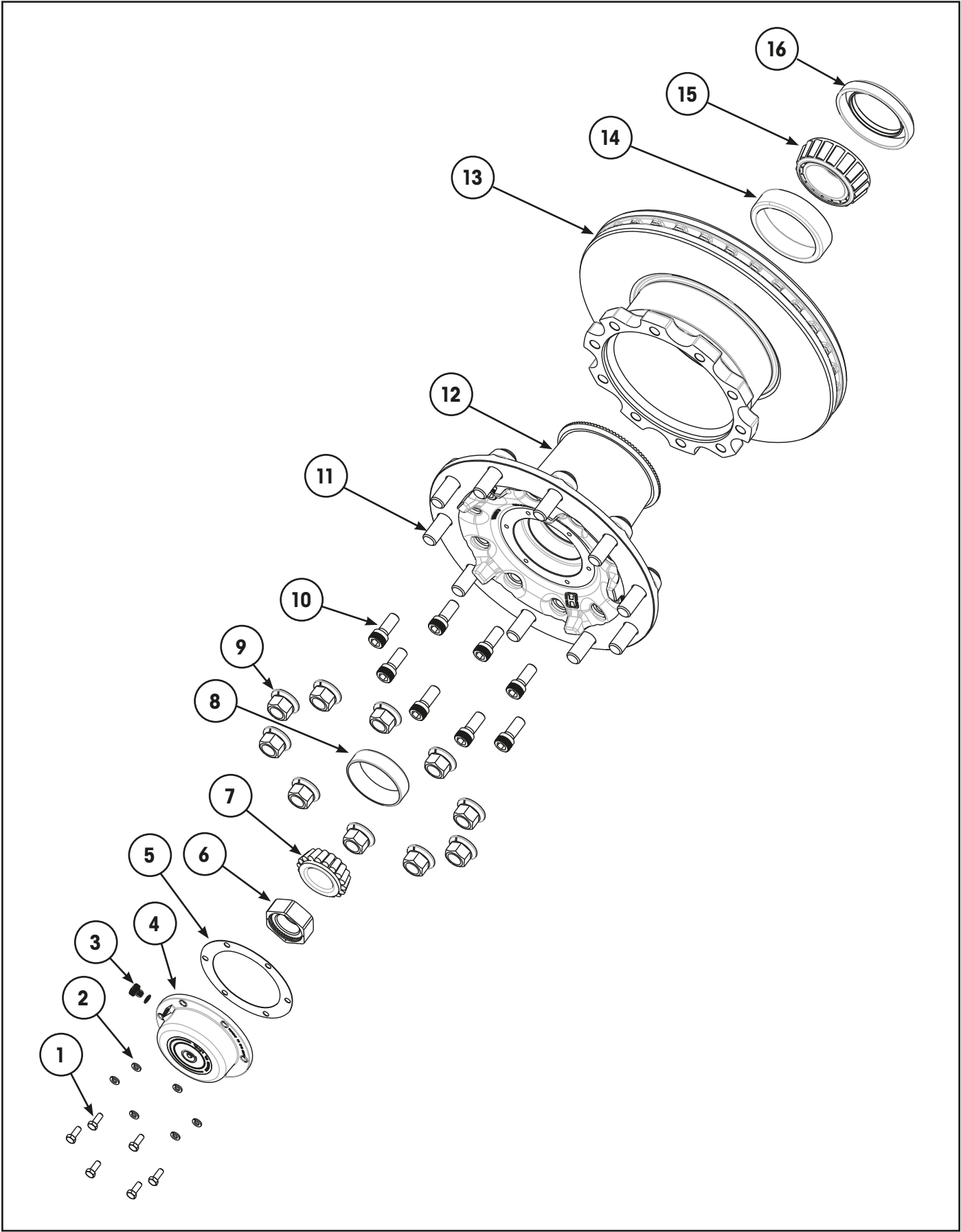
**EARLY TYPE HUB ASSEMBLY EXPLODED VIEW – UP TO 2012**

| Item | Part Number | Description                          | Qty | Notes  |
|------|-------------|--------------------------------------|-----|--|
| 1    | NSS         | Bolt – 5/16" UNC                     | 12  | Use item 4.  |
| 2    | N/A         | Washer – Lock 5/16 inch              | 12  | Use item 4.  |
| 3    | NSS         | Filler Plug – Hub Cap                | 2   | Use item 4.  |
| 4    | 98796-006   | Hub Cap Kit                          | 2   | Includes items 1, 2, 3 & 5.                              |
| 5    | A-32098     | Hub Cap Gasket                       | 2   | Included in items 4 & 16.                                |
| 6    | 97186-001   | Hub Nut – 1-1/2 inch Pro-Torq        | 2   |  |
| 7    | NSS         | Outer Bearing Cone                   | 2   | Use item 16.   |
| 8    | NSS         | Outer Bearing Cup                    | 2   | Use item 16.   |
| 9    | A-24695     | Nut Wheel - M22 x 1.5                | 20  |  |
| 10   | 98766-017   | Socket Head Screw 5/8" UNC x 11 inch | 20  |  |
| 11   | NLA         | Hub Assembly                         | 2   | <b>[1]</b> Refer note.                                   |
| 12   | NLA         | Rotor Assembly – 430 mm              | 2   | <b>[1]</b> Refer note.                                   |
| 13   | NSS         | Inner Bearing Cup                    | 2   | Use item 16.   |
| 14   | NSS         | Inner Bearing Cone                   | 2   | Use item 16.   |
| 15   | 98794-010   | Seal – Hub Mounted                   | 2   | Included in item 16.                                     |
| 16   | 98800-018   | Hub Bearing Service Kit              | 2   | Includes items 5, 6, 7, 13, 14 & 15.<br>Not illustrated. |

**[1] IMPORTANT:** In cases where an early type hub and/or rotor require replacement, it is recommended that the complete hub and rotor assembly be replaced with the later design hub and rotor assembly in pairs. To facilitate this, the hub & rotor service kit (part no. **98111-113**) should be used. Refer to "Late Type Hub Assembly – From 2013" on page 6.



LATE TYPE HUB ASSEMBLY – FROM 2013

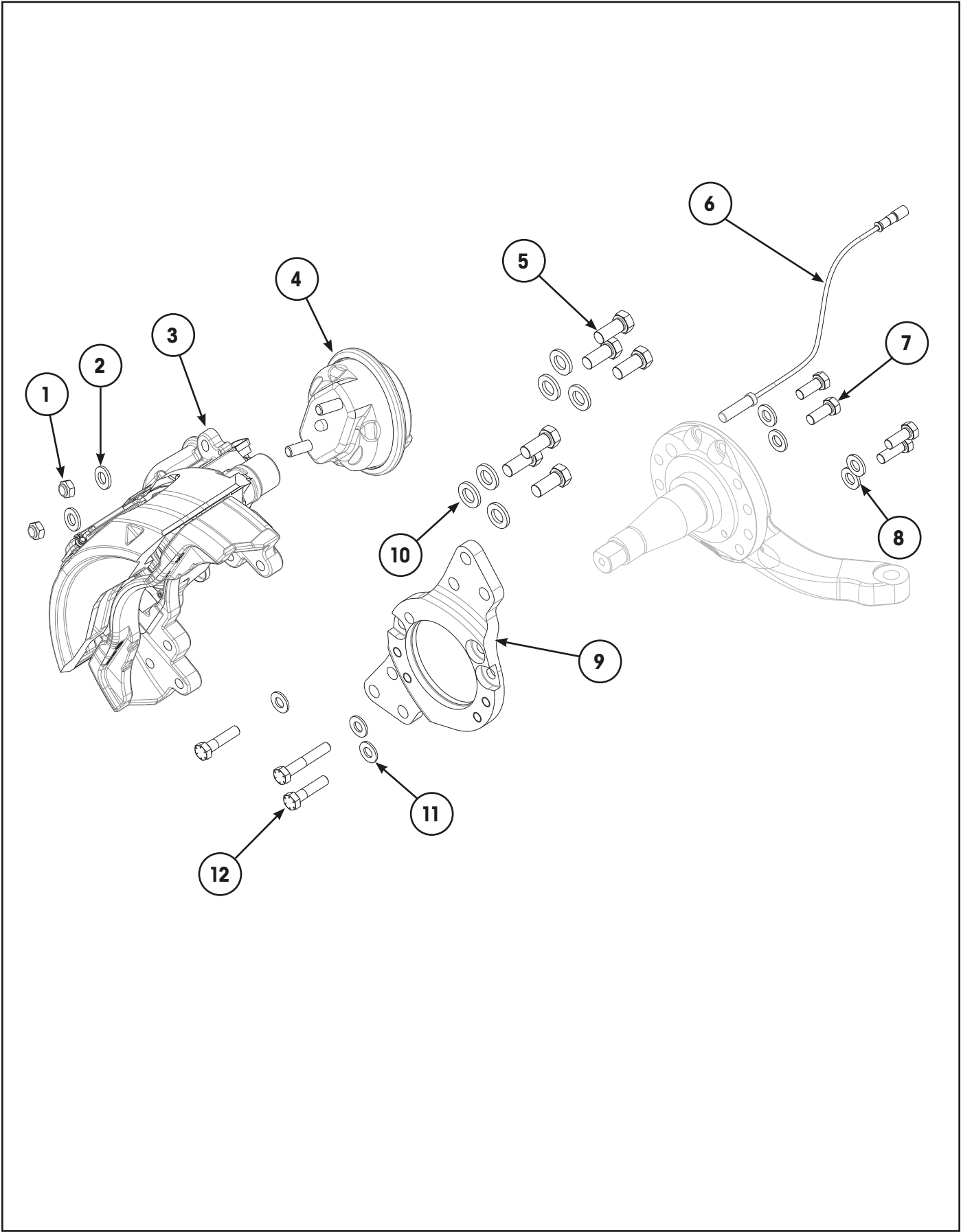


**LATE TYPE HUB ASSEMBLY – FROM 2013**

| Item | Part Number | Description                          | Qty | Notes  |
|------|-------------|--------------------------------------|-----|--|
| 1    | 98879-002   | Bolt – M8 x 1.25 x 20 mm             | 12  | Included in item 19.   |
| 2    | SA-1600-7   | Washer – Lock 5/16 inch              | 12  | Included in item 19.   |
| 3    | NSS         | Filler Plug – Hub Cap                | 2   | Use item 4.  |
| 4    | 98796-006   | Hub Cap Kit                          | 2   | Includes items 1, 2, 3 & 5.  |
| 5    | A-32098     | Hub Cap Gasket                       | 2   | Included in items 18 & 19.   |
| 6    | 97186-001   | Hub Nut – 1-1/2 inch Pro-Torq        | 2   |  |
| 7    | NSS         | Outer Bearing Cone                   | 2   | Use item 18. Included in items 18 & 19.  |
| 8    | NSS         | Outer Bearing Cup                    | 2   | Use item 18. Included in item 17, 18 & 19.                                     |
| 9    | A-24695     | Nut Wheel, M22 x 1.5 – 33 mm Hex     | 20  |  |
|      | 98817-007   | Nut Wheel, M22 x 1.5 – 32 mm Hex     | 20  | Included in item 19.   |
| 10   | 98766-017   | Socket Head Screw 5/8" UNC x 11 inch | 20  | Included in items 17 & 19.   |
| 11   | 98900-023   | Stud, Wheel – M22 x 1.5 x 2.9 Inch   | 20  | Included in items 17 & 19.   |
| 12   | C-33384-2   | Hub Assembly                         | 2   | Includes items 8, 11 & 14.<br>Included in items 17 & 19.                       |
| 13   | D-32193     | Rotor Assembly – 430 mm              | 2   | Included in items 17 & 19.   |
| 14   | NSS         | Inner Bearing Cup                    | 2   | Use item 18. Included in items 17, 18 & 19.                                    |
| 15   | NSS         | Inner Bearing Cone                   | 2   | Use item 18. Included in items 18 & 19.  |
| 16   | 98794-010   | Seal – Hub Mounted                   | 2   | Included in items 18 & 19.   |
| 17   | 98801-063   | Hub and Rotor Assembly               | 2   | Includes items 8, 10, 11, 12, 13 & 14.<br>Not illustrated.                     |
| 18   | 98800-015   | Hub Bearing Service Kit              | 2   | Includes items 5, 7, 8, 14, 15 & 16.<br>Not illustrated.                       |
| 19   | 98111-113   | Hardware, Hub & Rotor Service Kit    | 2   | Includes items 1, 2, 5, 7, 8, 9, 10, 11, 12, 13, 14, 15 & 16. Not illustrated. |



BRAKE CALLIPER ASSEMBLY

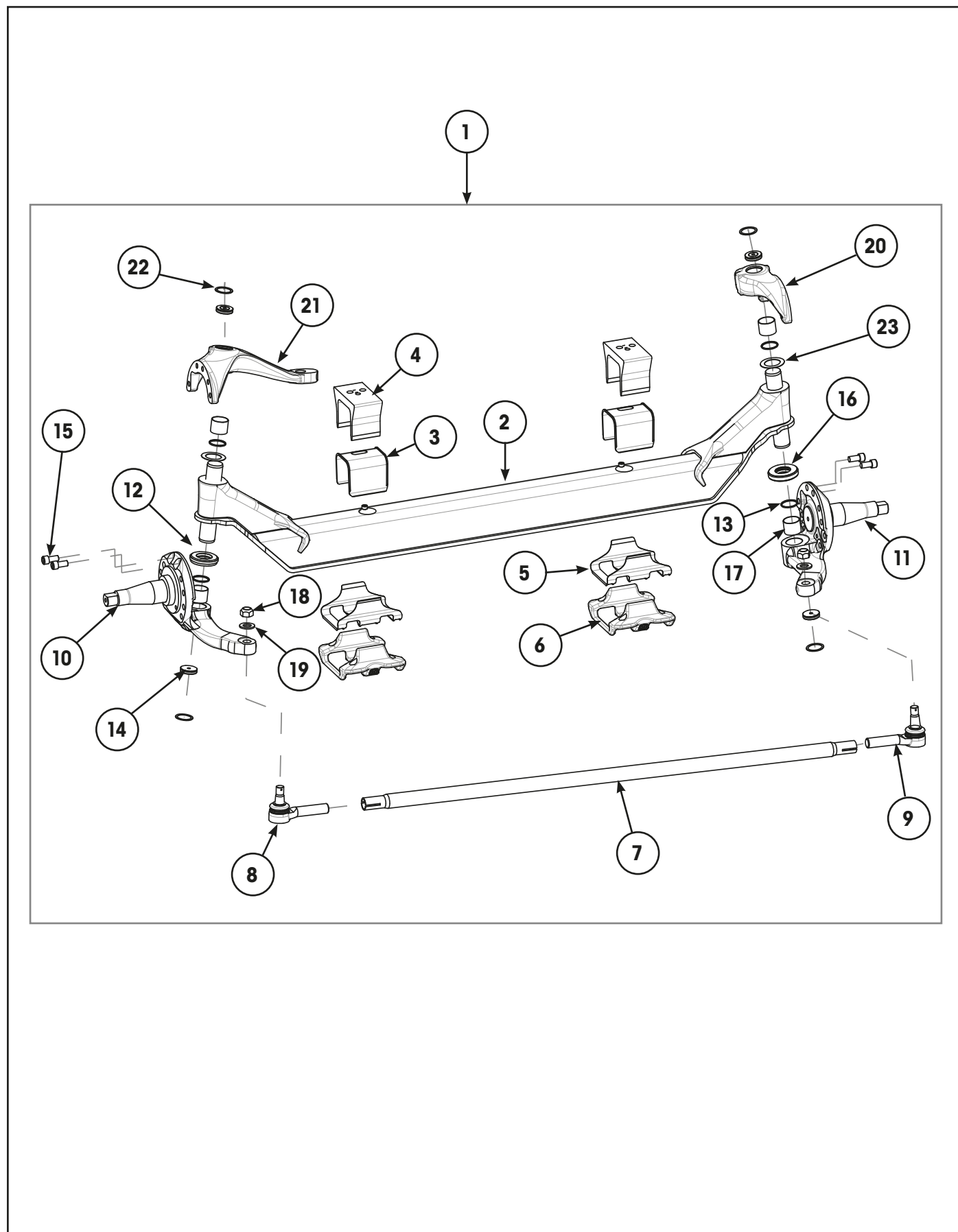




**BRAKE CALLIPER ASSEMBLY**

| Item | Part Number | Description                         | Qty | Notes   |
|------|-------------|-------------------------------------|-----|---|
| 1    | 97287-002   | Nut – Nyloc M16 x 1.5               | 4   | Included in item 15.                              |
| 2    | 58246-003   | Washer – Hardened, M16              | 4   | Included in item 15.                              |
| 3    | OBS         | Brake Calliper L/H                  | 1   | Refer to vehicle manufacturer.                    |
|      | OBS         | Brake Calliper R/H                  | 1   | Refer to vehicle manufacturer.                    |
| 4    | 98832-044   | Brake Chamber – Type 24             | 2   |   |
| 5    | 97023-015   | Bolt – Class 10.9 M20 x 1.5 x 45 mm | 12  | Included in item 17.                              |
| 6    | 98831-001   | Inductive Sensor - ABS              | 2   |   |
| 7    | 97492-001   | Bolt – Class 10.9 M16 x 1.5 x 40 mm | 6   | Included in item 16.                              |
|      | 97492-002   | Bolt – Class 10.9 M16 x 1.5 x 45 mm | 2   |   |
| 8    | 58246-003   | Washer – Hardened, M16              | 8   | Included in item 16.                              |
| 9    | 97174-003   | Torque Plate, L/H                   | 1   |   |
|      | 97174-004   | Torque Plate, R/H                   | 1   |   |
| 10   | 98573-005   | Washer – Narrow, M20                | 12  | Included in item 17.                              |
| 11   | 22962-004   | Washer – Hardened, 5/8 inch         | 6   | Included in item 16.                              |
| 12   | 97361-003   | Bolt – 5/8" UNC x 3.5 inch          | 2   | Included in item 16.                              |
|      | 97361-004   | Bolt – 5/8" UNC x 2.5 inch          | 4   |   |
| 13   | 99008-001   | Clamp – ABS Sensor                  | 2   | Not illustrated.                                  |
| 14   | 98881-018   | Brake Pad Kit                       | 1   | Not illustrated.                                  |
| 15   | 98111-134   | Hardware Kit – Brake Chamber        | 1   | Includes items 1 & 2. Not illustrated.            |
| 16   | 98111-137   | Hardware Kit – Torque Plate         | 1   | Includes items 7, 8, 11 & 12.<br>Not illustrated. |
| 17   | 98111-138   | Hardware Kit – Brake Calliper       | 1   | Includes items 5 & 10.<br>Not illustrated.        |

## AXLE ASSEMBLY 3.9 METRE WHEELBASE



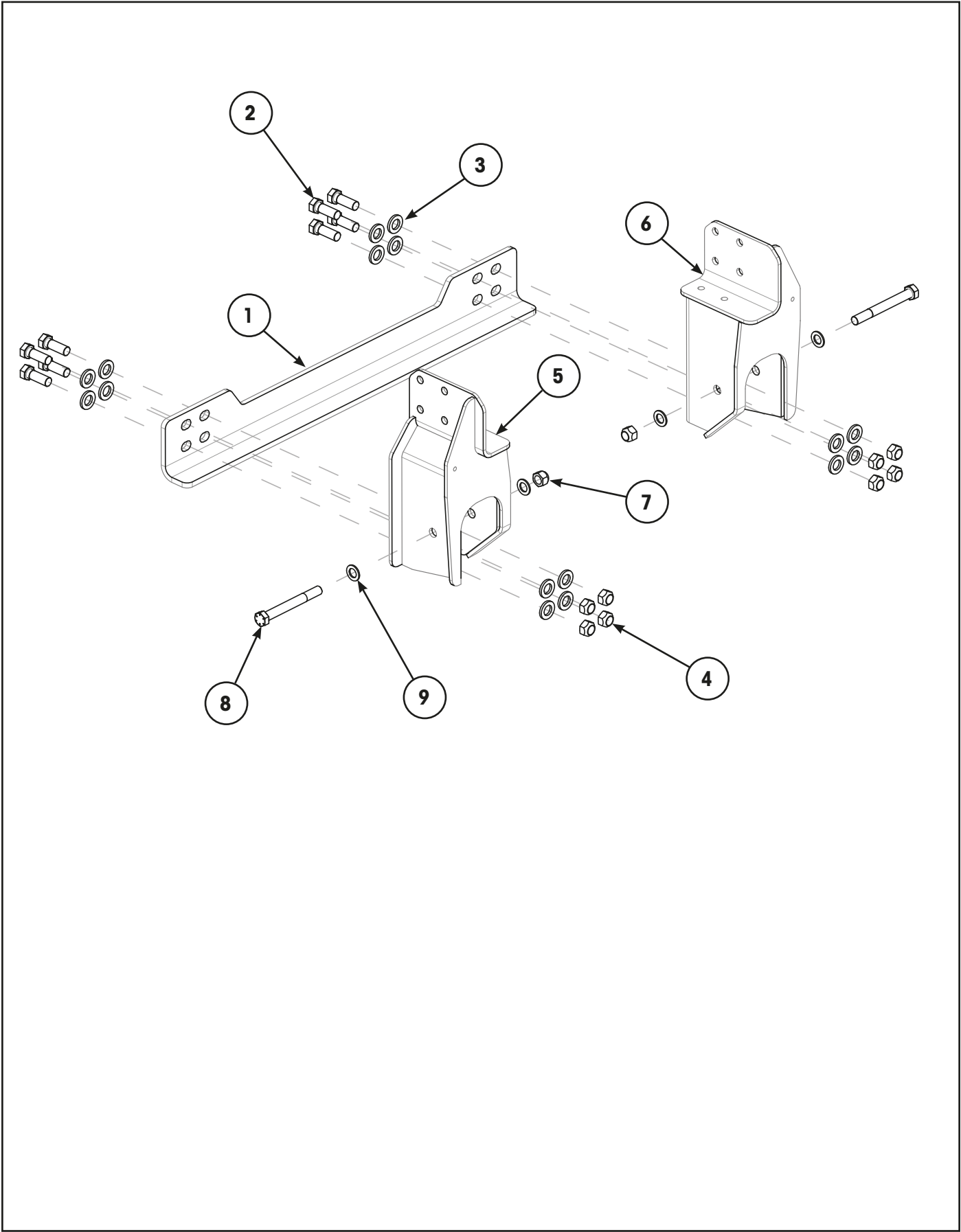
## AXLE ASSEMBLY 3.9 METRE WHEELBASE

| Item | Part Number | Description                               | Qty | Notes                          |
|------|-------------|---|-----|--------------------------------|
| 1    | 97321-007   | Complete Axle Assembly                    | 1   |                                |
| 2    | 67905-405   | Bare Axle Beam                            | 1   |                                |
| 3    | 97493-001   | Axle Wrap Liner – Top, LH                 | 1   |                                |
|      | 60508-000   | Axle Wrap Liner – Top, RH                 | 1   |                                |
| 4    | 97224-005   | Axle Wrap - Top                           | 2   |                                |
| 5    | 59845-000   | Axle Wrap Liner – Bottom                  | 2   |                                |
| 6    | 64722-003   | Axle Wrap - Bottom                        | 2   |                                |
| 7    | 64006-002   | Tie Rod Assembly                          | 1   | Includes items 8 & 9.          |
| 8    | 60961-027   | Tie Rod End Kit LH                        | 1   | Includes items 18 & 19         |
| 9    | 60961-028   | Tie Rod End Kit RH                        | 1   | Includes items 18 & 19         |
| 10   | 58900-005   | Steering Knuckle Assembly – LH            | 1   |                                |
| 11   | 58900-006   | Steering Knuckle Assembly – RH            | 1   |                                |
| 12   | NSS         | Roller Bearing Thrust Washer              | 1   | Use item 27.                   |
| 13   | NSS         | King Pin Seal                             | 4   | Use item 27.                   |
| 14   | 59156-000   | Grease Cap Assembly                       | 4   | Refer to item 27.              |
| 15   | 60236-001   | Socket Head Cap Screw 5/8 inch            | 4   | Refer to item 27.              |
| 16   | NSS         | Composite Bearing Thrust Washer           | 1   | Use item 27.                   |
| 17   | NSS         | King Pin Bushing                          | 4   | Use item 27.                   |
| 18   | NSS         | Nut – Castle 7/8 inch                     | 2   | Use item 8 or 9.               |
| 19   | 22962-007   | Washer Hardened 7/8 inch                  | 2   |                                |
| 20   | 60904-002   | Upper King Pin Connection Assembly - RH   | 1   |                                |
| 21   | 97177-010   | Steer Arm Assembly - LH                   | 1   |                                |
| 22   | 58937-000   | Retaining Ring                            | 4   | Refer to item 27.              |
| 23   | NSS         | King Pin Shims                            | 2   | Use item 27.                   |
| 24   | 17800-004   | Split Pin – Tie Rod End                   | 2   | Not illustrated.               |
| 25   | 60238-001   | 1/2 inch Square Head Bolt - Steering Stop | 2   | Not illustrated.               |
| 26   | 60240-000   | 1/2 inch Jam Nut – Steering Stop          | 2   | Not illustrated.               |
| 27   | 060961-885  | King Pin Bushing & Thrust Bearing Kit     | 1   | <b>[1]</b> Items 12-17, 22-23. |

**[1] NOTE:** Early **60961-040** kingpin and thrust bearing kit includes a roller and composite thrust bearing. It is replaced in service by **060961-885**, which includes two composite thrust bearings. However, **60961-040** may be used on the condition that the composite thrust bearing is installed on the right-hand side (steer linkage side), as detailed in AIRTEK service manual [97117-211](#).



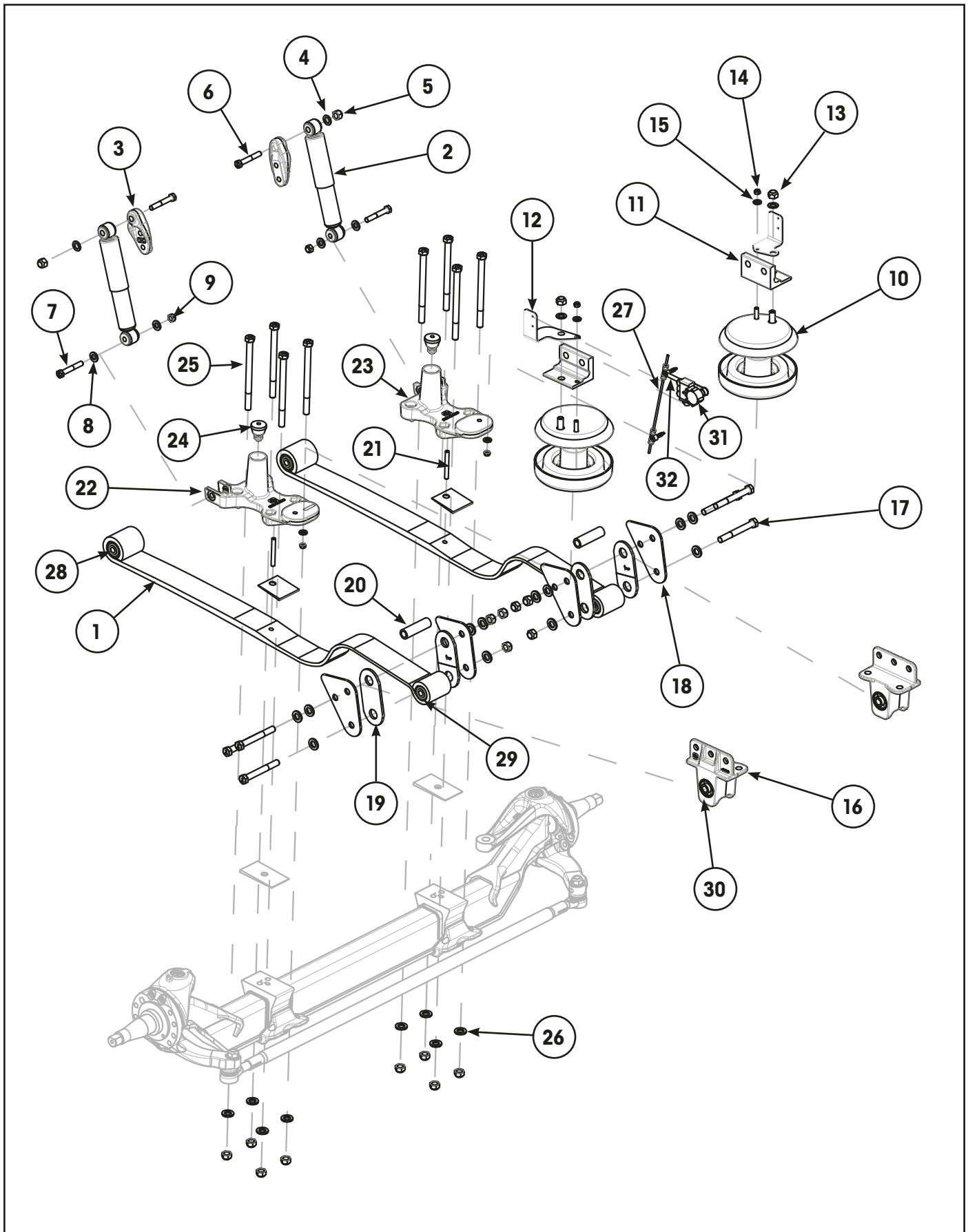
HANGER GROUP



**HANGER GROUP**

| Item | Part Number | Description                     | Qty | Notes  |
|------|-------------|---------------------------------|-----|--|
| 1    | 97213-012   | Cross Member                    | 1   |  |
| 2    | 97023-005   | Bolt – M20                      | 8   | Included in item 11.                         |
| 3    | 98573-005   | Washer – Hardened M20           | 16  | Included in item 11.                         |
| 4    | 97024-001   | Nut – Lock M20                  | 8   | Included in item 11.                         |
| 5    | 97213-010   | Front Hanger L/H                | 1   |  |
| 6    | 97213-011   | Front Hanger R/H                | 1   |  |
| 7    | 49842-000   | Nut – Lock 3/4 inch             | 2   | Included in item 10.                         |
| 8    | 97324-003   | Bolt – 3/4 inch                 | 2   | Included in item 10.                         |
| 9    | 22962-001   | Washer – Hardened 3/4 inch      | 4   | Included in item 10.                         |
| 10   | 98111-132   | Hardware Kit – Front Spring Eye | 1   | Includes items 7, 8 & 9.<br>Not illustrated. |
| 11   | 98111-133   | Hardware Kit – Cross Member     | 1   | Includes items 2, 3 & 4.<br>Not illustrated. |

## SUSPENSION ASSEMBLY



**SUSPENSION ASSEMBLY**

| Item | Part Number | Description                                     | Qty | Notes                             |
|------|-------------|---|-----|-----------------------------------|
| 1    | 67477-000   | Spring Assembly                                 | 2   | Includes bushes, items 28 & 29.   |
| 2    | 98583-033   | Shock Absorbers                                 | 2   |                                   |
| 3    | 67463-002   | Upper Shock Mount Bracket                       | 2   |                                   |
| 4    | 22962-001   | Washer – Hardened 3/4 inch                      | 6   | Included in item 34.              |
| 5    | 49842-000   | Nut – Lock 3/4 inch                             | 2   | Included in item 34.              |
| 6    | 98766-004   | Bolt – 3/4 inch                                 | 2   | Included in item 34.              |
| 7    | 97020-004   | Bolt – M16                                      | 2   | Included in item 34.              |
| 8    | 58246-003   | Washer- Hardened M16                            | 4   | Included in item 34.              |
| 9    | 97021-001   | Nut – Lock M16                                  | 2   | Included in item 34.              |
| 10   | 60716-002   | Air Springs                                     | 2   |                                   |
| 11   | 60738-002   | Bracket Air Spring                              | 2   |                                   |
| 12   | 97212-004   | Height Control Valve Bracket L/H                | 1   |                                   |
| 13   | 97024-001   | Nut – Lock M20                                  | 18  | Included in items 35, 36 & 37.    |
| 14   | 58248-000   | Nut – Lock M12                                  | 2   | Included in item 35.              |
| 15   | 58246-001   | Washer – Hardened M12                           | 2   | Included in item 35.              |
| 16   | 97214-010   | Bracket – Shackle Assembly                      | 2   | Includes bush, item 30.           |
| 17   | 97023-006   | Bolt – M20 x 2.5                                | 6   | Included in item 37.              |
| 18   | 98391-030   | Shackle Plate                                   | 4   |                                   |
| 19   | 97313-004   | Wear Pad  | 4   |                                   |
| 20   | 60631-000   | Shackle Stop Spacer                             | 2   | Included in item 37.              |
| 21   | 97392-007   | Dowel Pin 72.9mm                                | 2   |                                   |
| 22   | 97217-001   | Top Spring Pad L/H                              | 1   |                                   |
| 23   | 97217-002   | Top Spring Pad R/H                              | 1   |                                   |
| 24   | 64080-000   | Bump Stop                                       | 2   |                                   |
| 25   | 97023-013   | Bolt – M20 x 2.5                                | 8   | Included in item 36.              |
| 26   | 98573-005   | Washer – Hardened M20                           | 24  | Included in items 35, 36 & 37.    |
| 27   | 98600-006   | Height Control Valve Rod                        | 1   |                                   |
| 28   | 60432-000   | Bush – Spring, Front                            | 2   | Part of item 1.                   |
| 29   | 60443-000   | Bush – Spring, Rear                             | 2   | Part of item 1.                   |
| 30   | 60443-000   | Bush – Bracket, Shackle                         | 2   | Part of item 16.                  |
| 31   | 97703-001   | ECAS Height Sensor                              | 1   |                                   |
| 32   | 97495-002   | Height Control Valve Lever – Metal Z Arm        | 1   |                                   |
| 33   | 98111-139   | Hardware Kit – HCV to Bracket. Not illustrated. | 1   |                                   |
| 34   | 98111-130   | Hardware Kit – Shock Absorber. Not illustrated. | 1   | Includes items 4, 5, 6, 7, 8 & 9. |
| 35   | 98111-131   | Hardware Kit – Air Spring. Not illustrated.     | 1   | Includes items 13, 14, 15 & 26.   |
| 36   | 98111-135   | Hardware Kit – Clamp group. Not illustrated.    | 1   | Includes items 13, 25 & 26.       |
| 37   | 98111-136   | Hardware Kit – Shackle. Not illustrated.        | 1   | Includes items 13, 17, 20 & 26.   |



## REVISIONS TABLE

| DATE     | REV | PAGE | DESCRIPTION  |
|----------|-----|------|--|
| May-2020 | G   | All  | New format. Update parts list. ECN 10116, 10526 & 11275. |
| Jun-2021 | H   | 9    | Update beam number, ECN 11854.                           |
| Jun-2021 | H   | 5, 7 | Remove bearing no longer available, ECN 11858.           |
| Jun-2021 | H   | 11   | Update thrust/kingpin bearing kits, ECN 11620.           |
| Feb-2023 | I   | 9    | Update calliper numbers, ECN 12056.                      |
| Nov-2024 | J   | 9    | Obsolete unavailable callipers.                          |
|          |     |      |  |

Actual product performance may vary depending upon vehicle configuration, operation, service and other factors.

All applications must comply with applicable Hendrickson specifications and must be approved by the respective vehicle manufacturer with the vehicle in its original, as-built configuration.  
Contact Hendrickson for additional details regarding specifications, applications, capacities, and operation, service and maintenance instructions.

**Need Help?** Australia Call **+61 3 8792 3600** or Email **customerservice@hendrickson.com.au**  
New Zealand Call **+64 9 570 4721** or Email **nz-customerservice@hendrickson.co.nz**



[www.hendrickson.com.au](http://www.hendrickson.com.au)

**HENDRICKSON ASIA PACIFIC**  
ABN 21 004 992 769  
32- 44 Letcon Drive, P.O. Box 1063  
Dandenong, Victoria, 3175  
61.3.8792.3600 • Fax 61.3.8792.3699

**HENDRICKSON NEW ZEALAND**  
Unit P, 24 Allright Place  
Mt Wellington, Auckland, 1060  
64.9.570.4721 • Fax 64.9.570.4816