

TECHTIPS



www.hendrickson-intl.com

GO LIGHT...

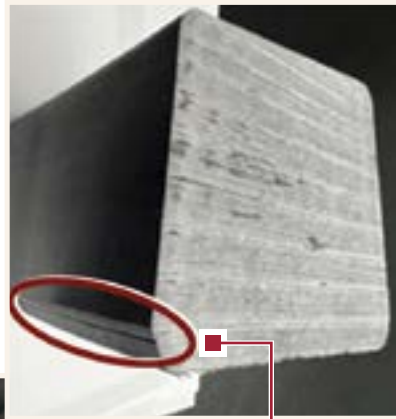
LITEFLEX® Composite Springs for Lightweight Solutions

Hendrickson's LITEFLEX composite springs are currently produced for major North American and European vehicle manufacturers as well as for automotive applications in Asia and are a proven choice for today's short- and long-haulers.

Hendrickson's engineered precision of composite springs delivers products in which manufacturers, fleets and owner-operators can benefit from:

- improved ride
- reduction in weight
- lower maintenance
- increased load capacity and durability
- enhanced fuel economy
- corrosion resistance
- consistent ride height
- decreased vibration and harshness feedback

Composite springs are formed using an advanced molding process that may result in visible parting lines on the finished parts, see below. Such molding parting lines (1) are normal and acceptable, (2) do not adversely affect the proper performance of the composite spring, and (3) should not be mistaken to be cracks in the composite material.

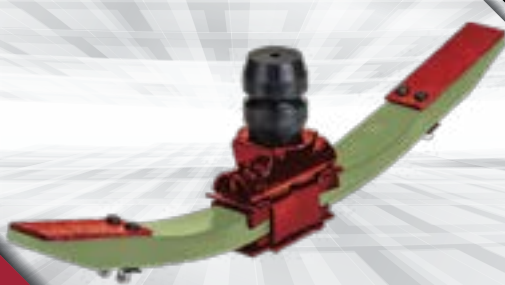


Typical Molding Parting Lines



NOTE: As detailed in the Commercial Vehicle Safety Alliance's (CVSA) North American Standard "Out-of-Service" Criteria handbook, a crack in a composite spring is considered to be a separation in any axis of the spring such that the crack passes completely through the composite material. Pay close attention when inspecting composite springs for signs of any potential cracks or other damage. See the next page for examples of composite spring crack conditions that meet the CVSA's "North America Standard Out-of-Service Criteria".

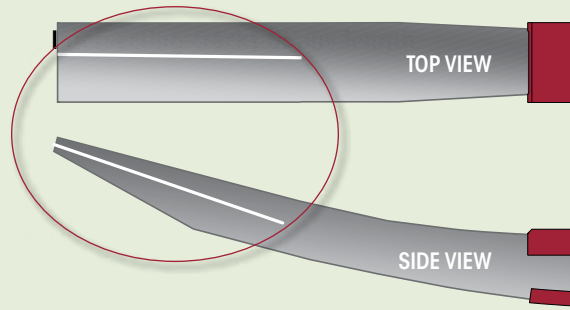




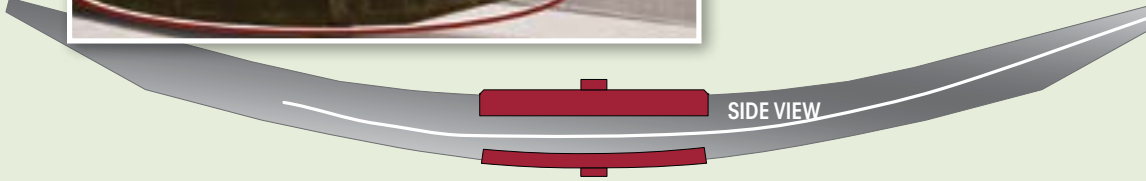
There is only one way to ensure the system's original performance... ask for Hendrickson genuine parts by name.

Examples of composite spring crack conditions that meet the CVSA's "North America Standard Out-of-Service Criteria*".

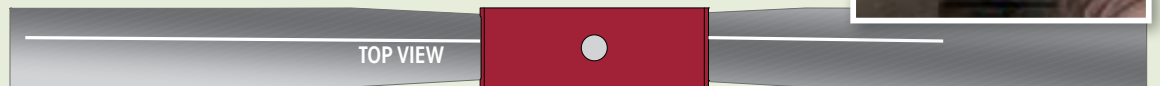
Intersecting cracks of any length



Side to side crack extending beyond 75% of the length of the spring



Top to bottom crack extending beyond 75% of the length of the spring



* See CVSA's North American Standard "Out-of Service" Criteria handbook for additional details.

ORIGINAL PARTS ORIGINAL FIT ORIGINAL PERFORMANCE

Call Hendrickson at 1.866.755.5968 (toll-free) or 1.630.910.2800 for additional information.



www.hendrickson-intl.com

TRUCK COMMERCIAL VEHICLE SYSTEMS
800 South Frontage Road
Woodridge, IL 60517-4904 USA
1.866.755.5968 (Toll-free U.S. and Canada)
1.630.910.2800 (Outside U.S. and Canada)
Fax 1.630.910.2899

12463-042 Rev A 06-24

© 2024 Hendrickson USA, L.L.C. All Rights Reserved. All trademarks shown are owned by Hendrickson USA, L.L.C., or one of the affiliates, in one or more countries. Information contained in this literature was accurate at the time of publication. Product changes may have been made after the copyright date that are not reflected.

Printed in United States of America